



Portfolio

Interior Architect

Maria Alejandra Martinez Jugo



Interior Architect

Maria Alejandra Martinez Jugo

✉ mamartinez180692@gmail.com

☎ 07763 785 610

📍 Leicestershire, UK

Interior Architect with a strong background in high-end residential and bespoke interior projects. Experienced in delivering calm, refined interiors with a focus on proportion, materiality and architectural detail. Skilled in taking projects from concept through to technical resolution, coordinating bespoke joinery, kitchens and bathrooms, and ensuring design intent is realised on site.

Education

Master in Interior Architecture and Design
University of Hertfordshire – UK
–2022 Graduate with distinction

Degree in Architecture
UPC– PERU
– 2017 Graduate

Skills & Languages

● Spanish ● English ● German

AutoCad	Sketchup	Photoshop	InDesign	Autokitchen
Virtual Worlds	TruBlue	Customer service	Model making	Interior design



2023

COATES MASTER

Residential Bathroom

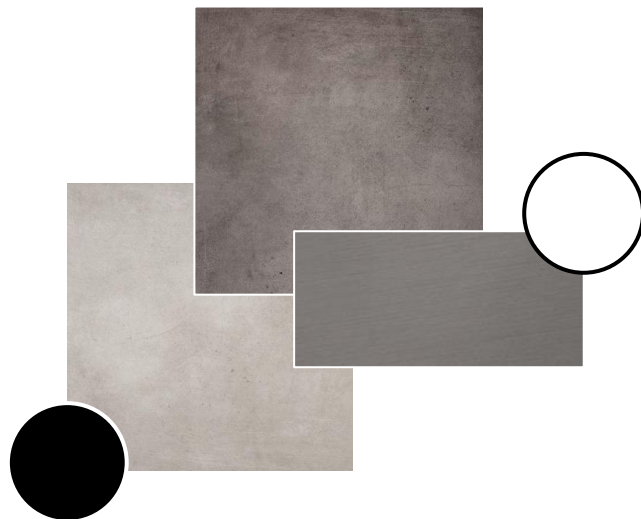
A high-end residential bathroom combining refined materiality and technical detailing to elevate everyday rituals into a calm, curated experience.





Design Concept

1. Light grey porcelain
2. Dark grey porcelain
3. White ceramic
4. Black glass
5. Brushed black chrome brass work



Suttle, monochromatic and symmetric design

The design explores symmetry and balance, using natural light as the main architectural driver.

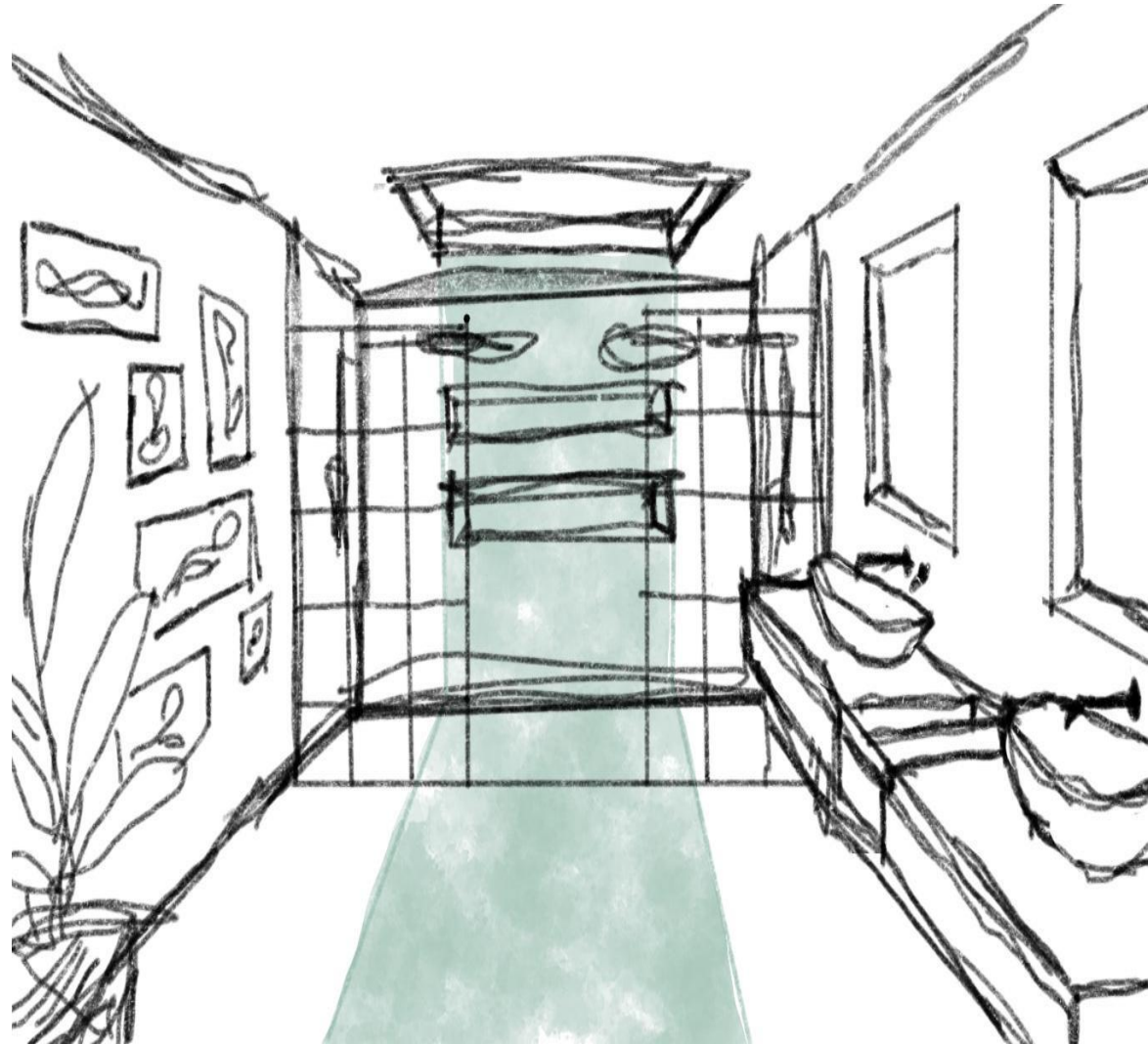
Materiality was kept deliberately restrained to enhance spatial clarity and longevity.





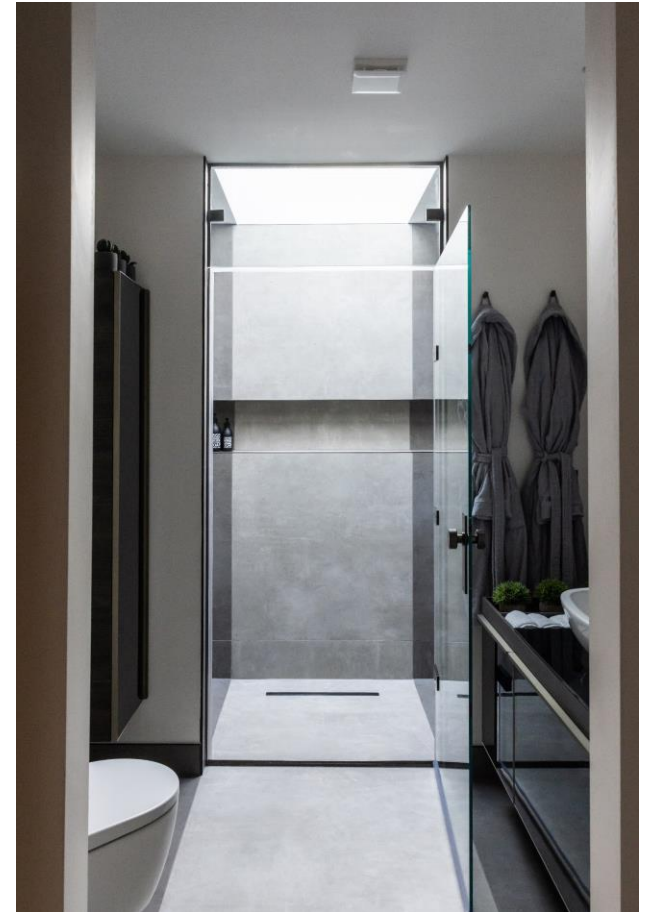
The design evolution, from draft...

The layout involved from early spatial studies focused on symmetry and circulation, refined through technical constraints and client requirements.



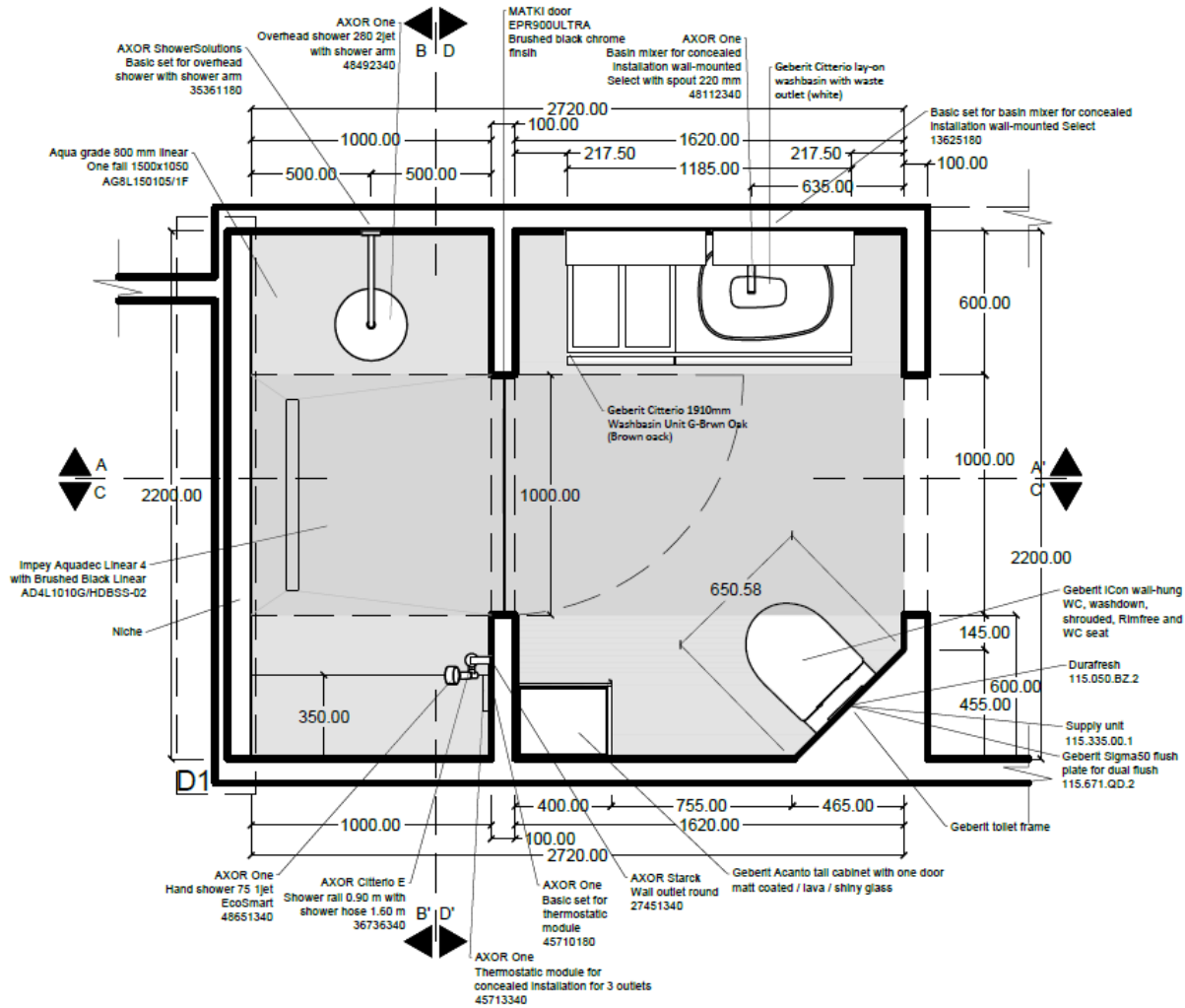


...to execution

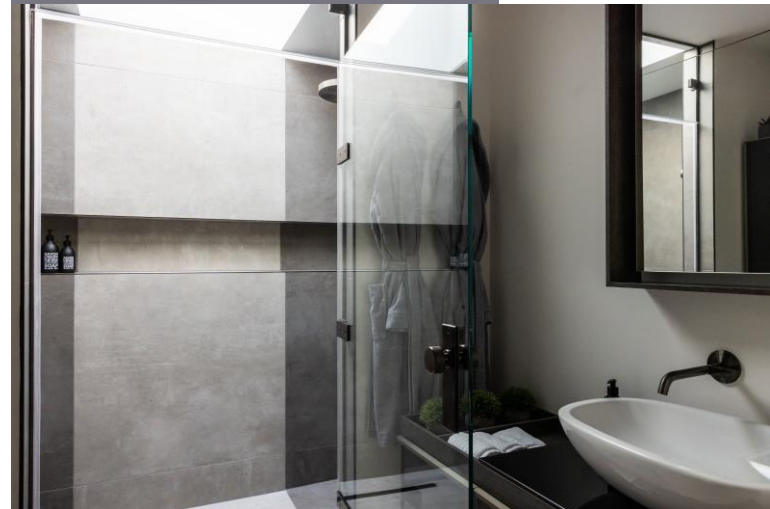
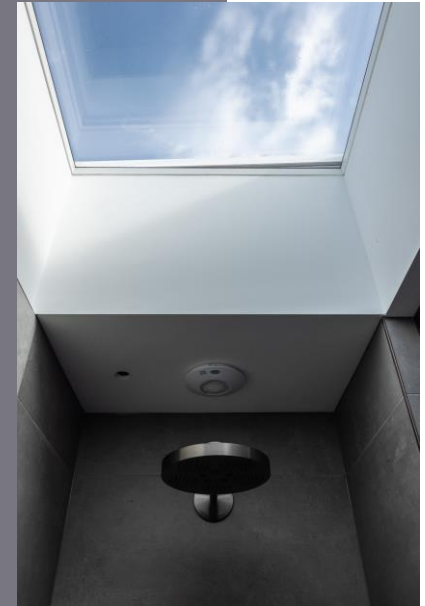


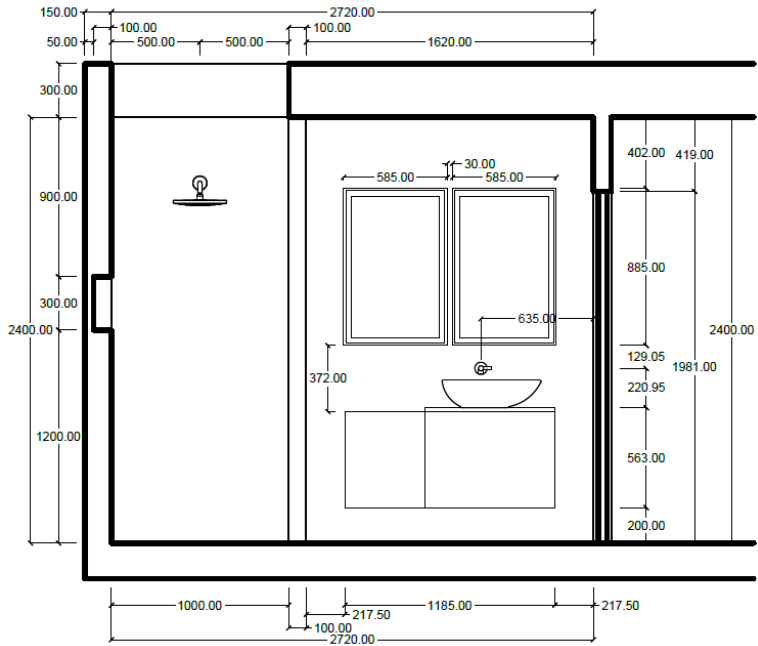
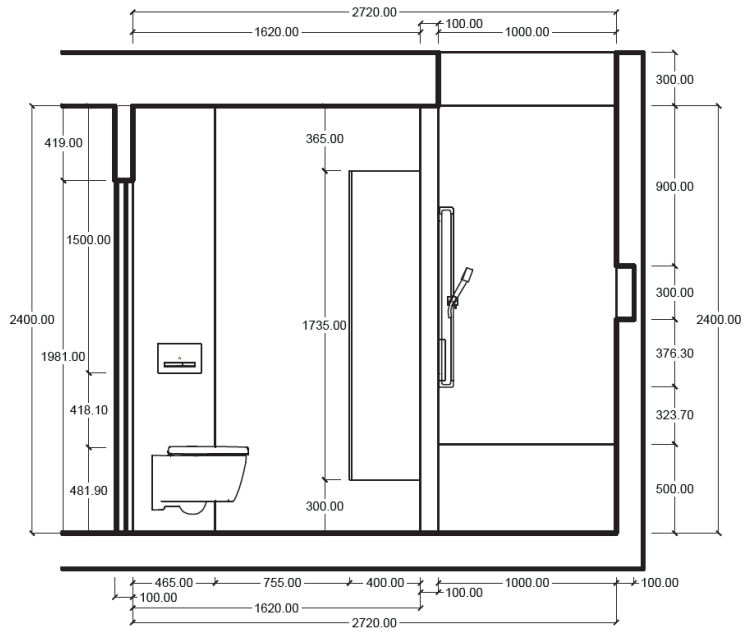


Technical drawings & Coordination



...Take advantage of the natural light and make it the focus point







2025



BAV KITCHEN

Luxury Residential Kitchen

A functional and aesthetic kitchen redesign balancing workflow efficiency, material cohesion and contemporary residential character.



Elegance in the classics



This project explores a contemporary interpretation of British residential kitchen design, balancing classical proportions with modern detailing and material richness. A refined palette combines limestone painted cabinetry with walnut joinery, ribbed timber panels and veined marble worktops.

Aged brass detailing, including bespoke hardware and a boiling water tap, introduces warmth and subtle contrast, reinforcing the project's understated luxury.

Integrated lighting accentuates architectural lines and material textures, ensuring a sophisticated yet highly functional domestic environment.

Mood Board

1. Brushed Walnut
2. Limestone
3. Aged brass handles
4. Colorado dunes worktop
5. Crema Neve Structured







2025



SPA EN SUITE

Luxury Residential Bathroom

A private spa retreat designed to integrate wellness technology within a refined residential setting.



Design intent



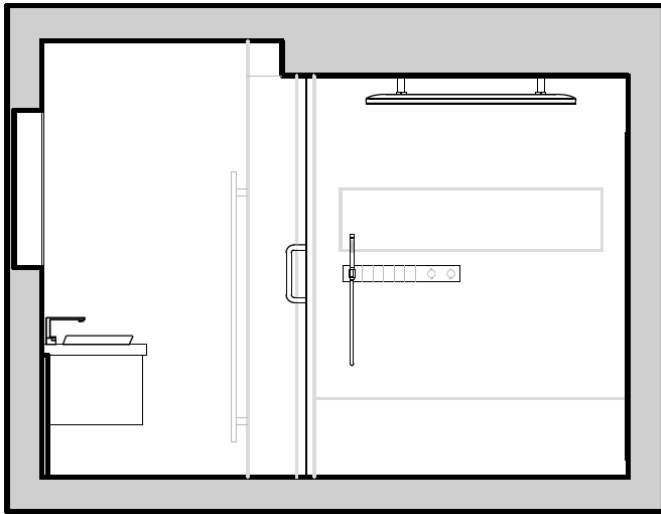
The layout prioritises spatial openness and visual continuity through transparent zoning and aligned focal points.

Key considerations:

- Clear wet / dry separation
- Direct circulation between bath and shower
- Vanity positioned as visual anchor
- Transparency and reflection to make the space feel as big as possible



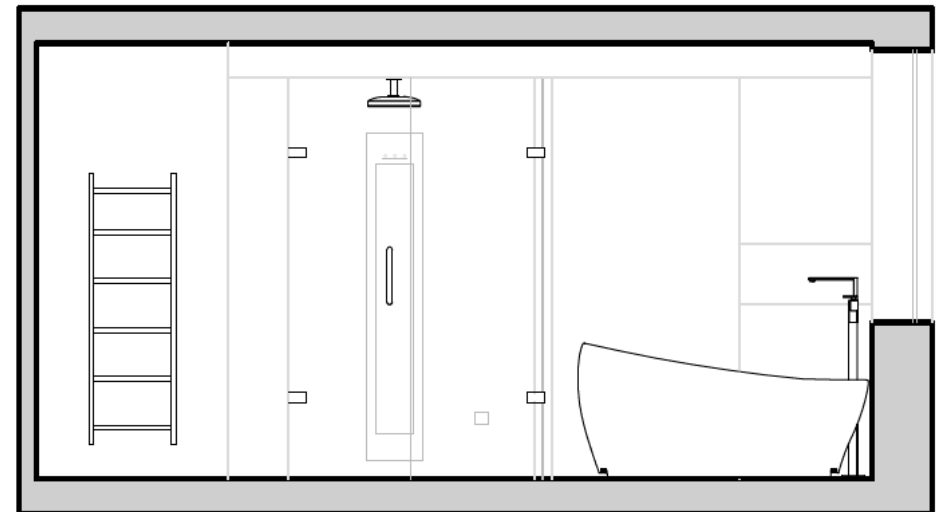
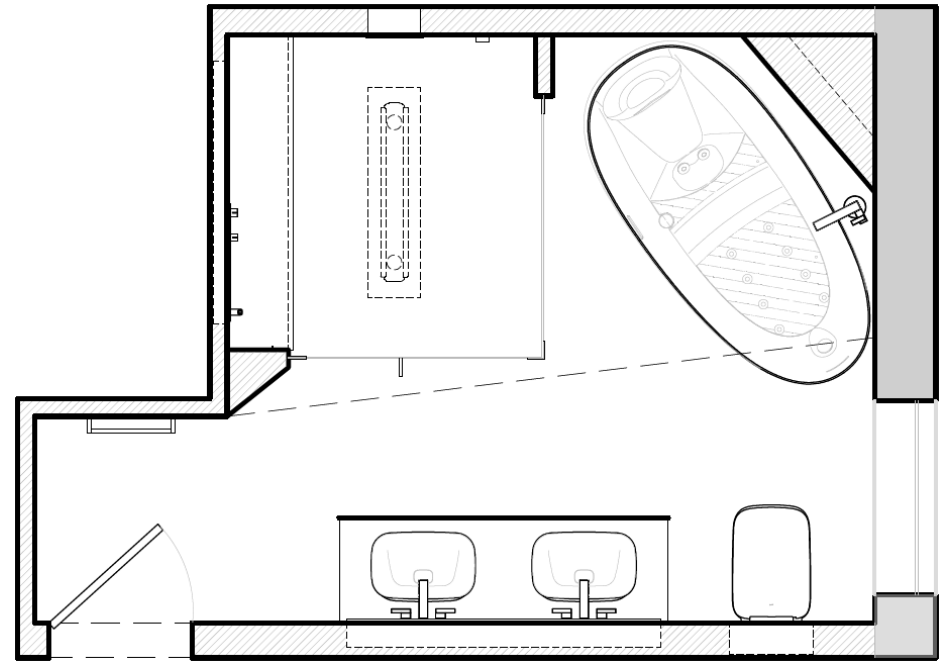
Technical drawings



The project was developed with full technical coordination, including lighting integration, sanitary positioning and built-in detailing.

Drawings demonstrate:

- Shower enclosure build-up
- Floating vanity construction
- Built in specifications






Key Wellness Features

- Integrated Sunshower
- Steam generator within walk-in enclosure
- Freestanding floatation
Toto bath
- Toto Neorest Wc

Material Strategy

- Warm stone surfaces paired with dark timber cabinetry and red-gold brass fittings to create contrast and depth while maintaining a calm spa atmosphere.





The spatial layout is designed to enhance flow and visual depth, allowing each element to be experienced as part of a cohesive whole rather than isolated functions. Glass partitions and mirrored surfaces maintain openness while subtly defining zones.



2021



THE COCOON

Residential interior

A London flat designed for a client experiencing high-functioning depression. This project explores how interior architecture can act as a behavioural framework — supporting focus, stability and controlled social interaction through spatial form, light and material continuity.

Design Journal

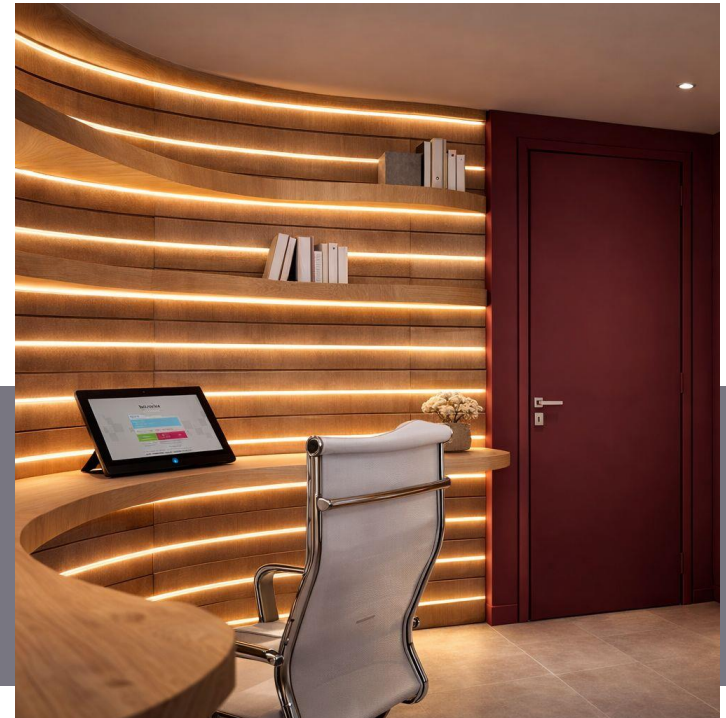


Spatial Strategy



Clear adjacency between office, kitchen and living areas supports routine — essential for clients managing fluctuating motivation levels.

A continuous timber surface mediates between private and social zones.
Curves define the workspace, reducing distraction and creating psychological containment.
As the geometry straightens, the space becomes more open and socially structured.





Model testing

The process of designing the wall



FOAM 1/25

The first test was in foam which allowed for transparency and play with light, this was broad back up later in the process.



MDF 1/20

Next step was test it in MDF. This gave a better idea of the layering and structure, first tested with circular columns, to then go to cross section steel ones.



PLYWOOD 1/2

The final model was to experiment with the structure of the layers themselves and how the final product would look like.

Material & Environmental Response



Layered wood introduces warmth without visual heaviness.
Integrated LED lighting provides ambient consistency, reducing harsh contrasts and supporting the rhythm.
Built-in storage reduces clutter and decision fatigue.
The project positions interior architecture not as aesthetic styling, but as an environmental support system.





2022



THE TREVOR PODS

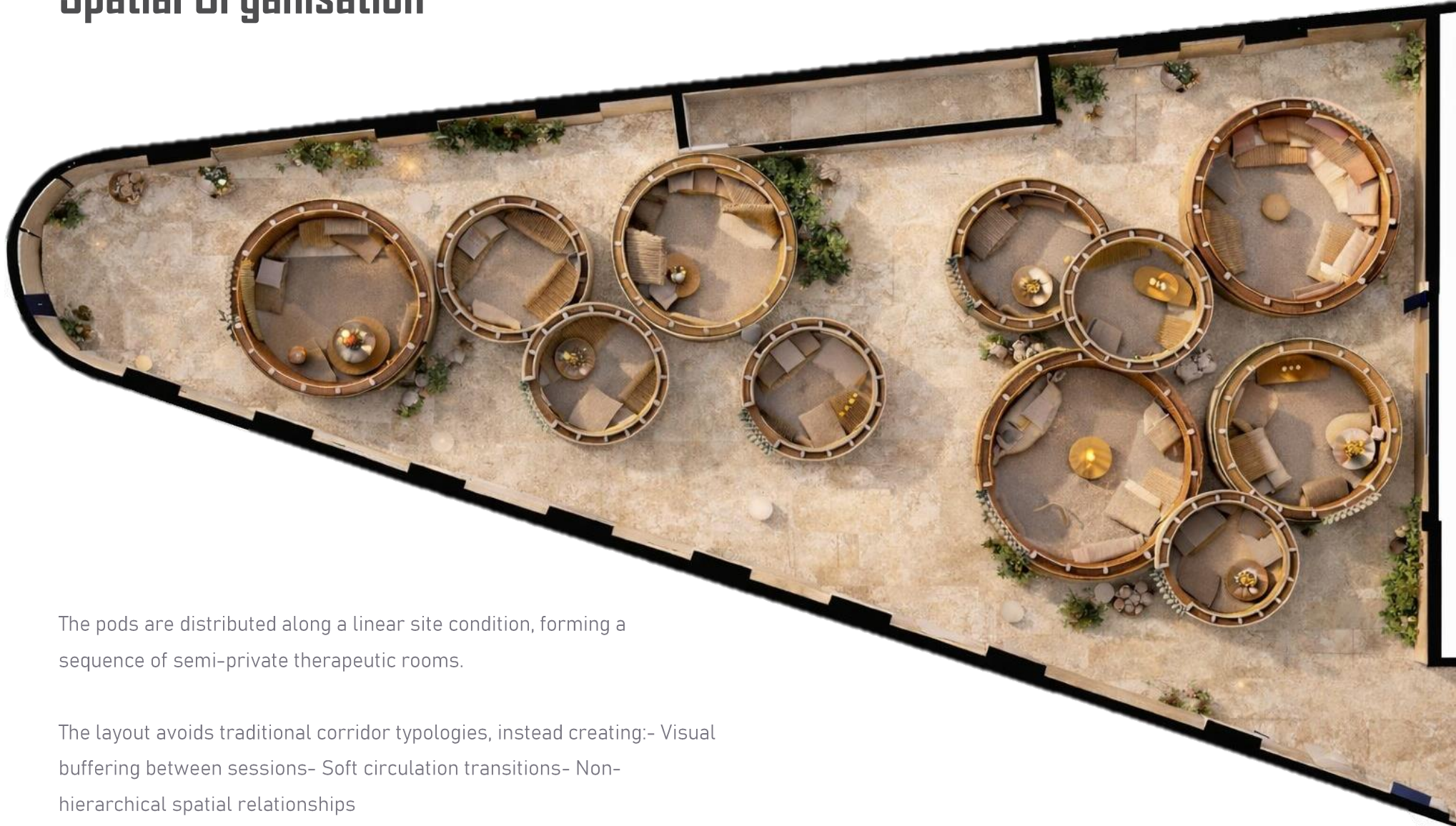
1:1 Therapy space

A modular system of enclosed therapy spaces designed for confidential face-to-face sessions between therapist and client. The project explores how geometry, scale and materiality can actively support psychological safety.

[Project folder](#)



Spatial Organisation



The pods are distributed along a linear site condition, forming a sequence of semi-private therapeutic rooms.

The layout avoids traditional corridor typologies, instead creating:- Visual buffering between sessions- Soft circulation transitions- Non-hierarchical spatial relationships



What is a Pod?

Each Pod is a Private 1:1 Therapy Room

Designed for:

- 1 therapist
- 1 client
- Seated face-to-face dialogue

The circular enclosure reduces visual distraction and external stimuli, creating a contained and non-institutional environment for conversation.



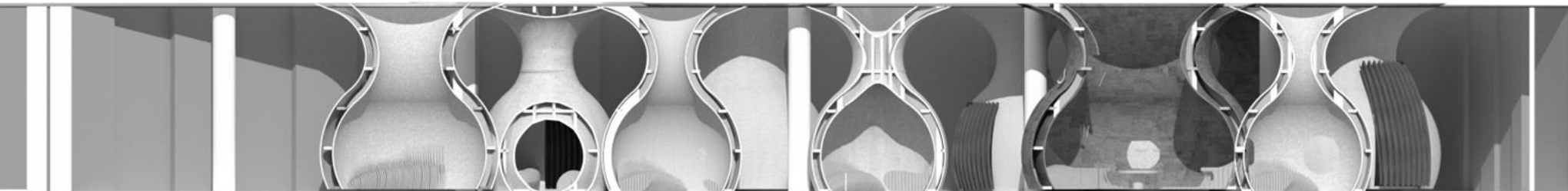
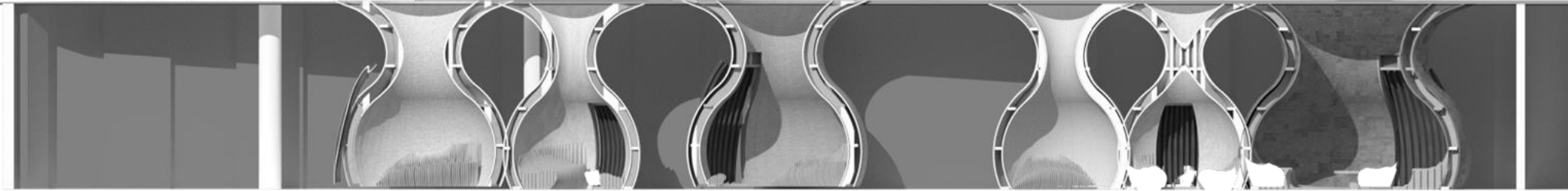
Form & System



The seating and enclosure are generated through repetitive vertical ribs:

- CNC-fabricated timber elements
- Modular assembly logic
- Scalable diameters (2-4m)

The geometry operates simultaneously as structure, furniture and spatial boundary.



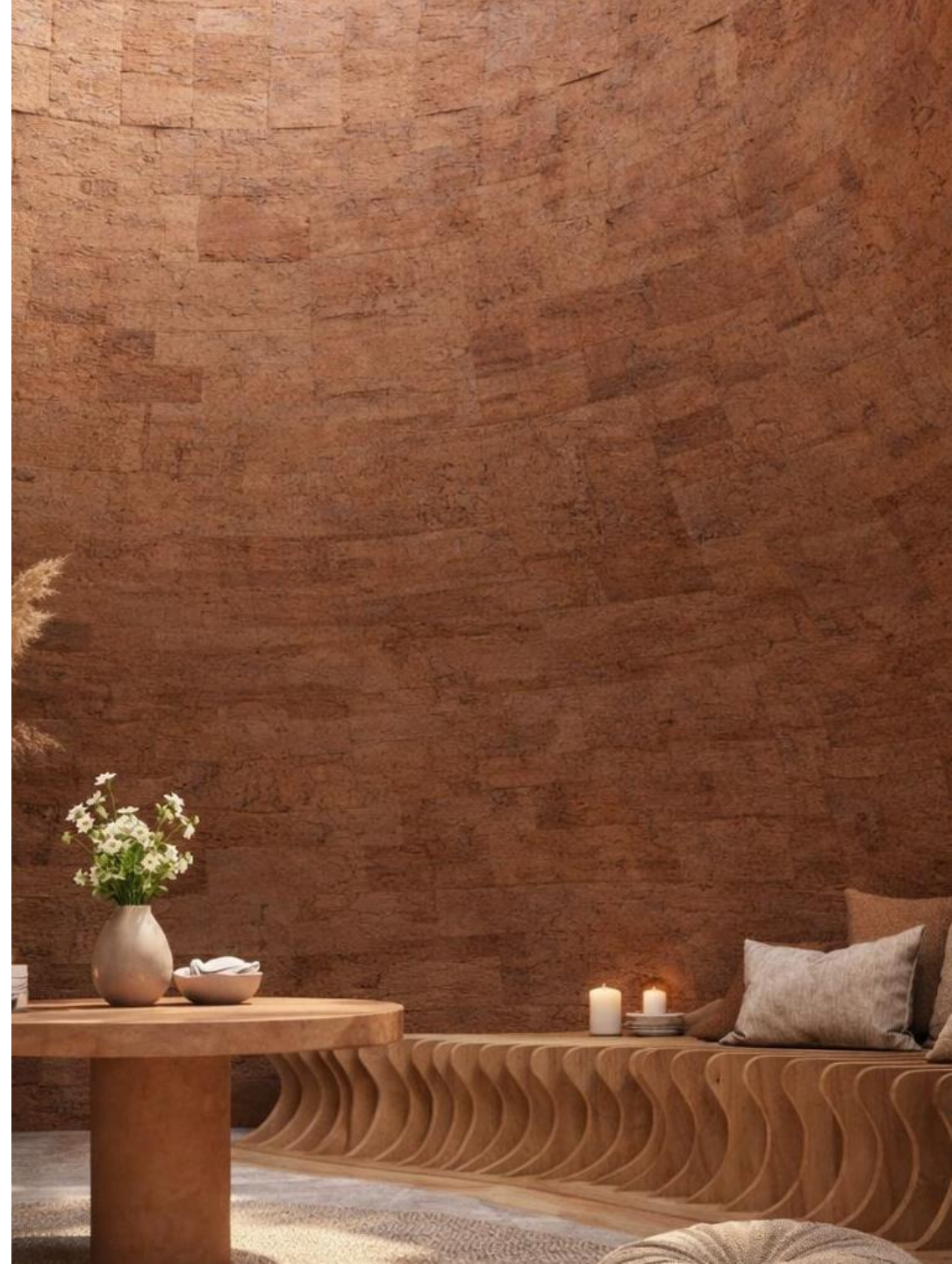


Material Strategy

Cork wall lining provides:

- Acoustic absorption
- Warm tactile quality
- Psychological softness

Natural materials and indirect lighting replace clinical aesthetics with a grounded and comforting atmosphere.

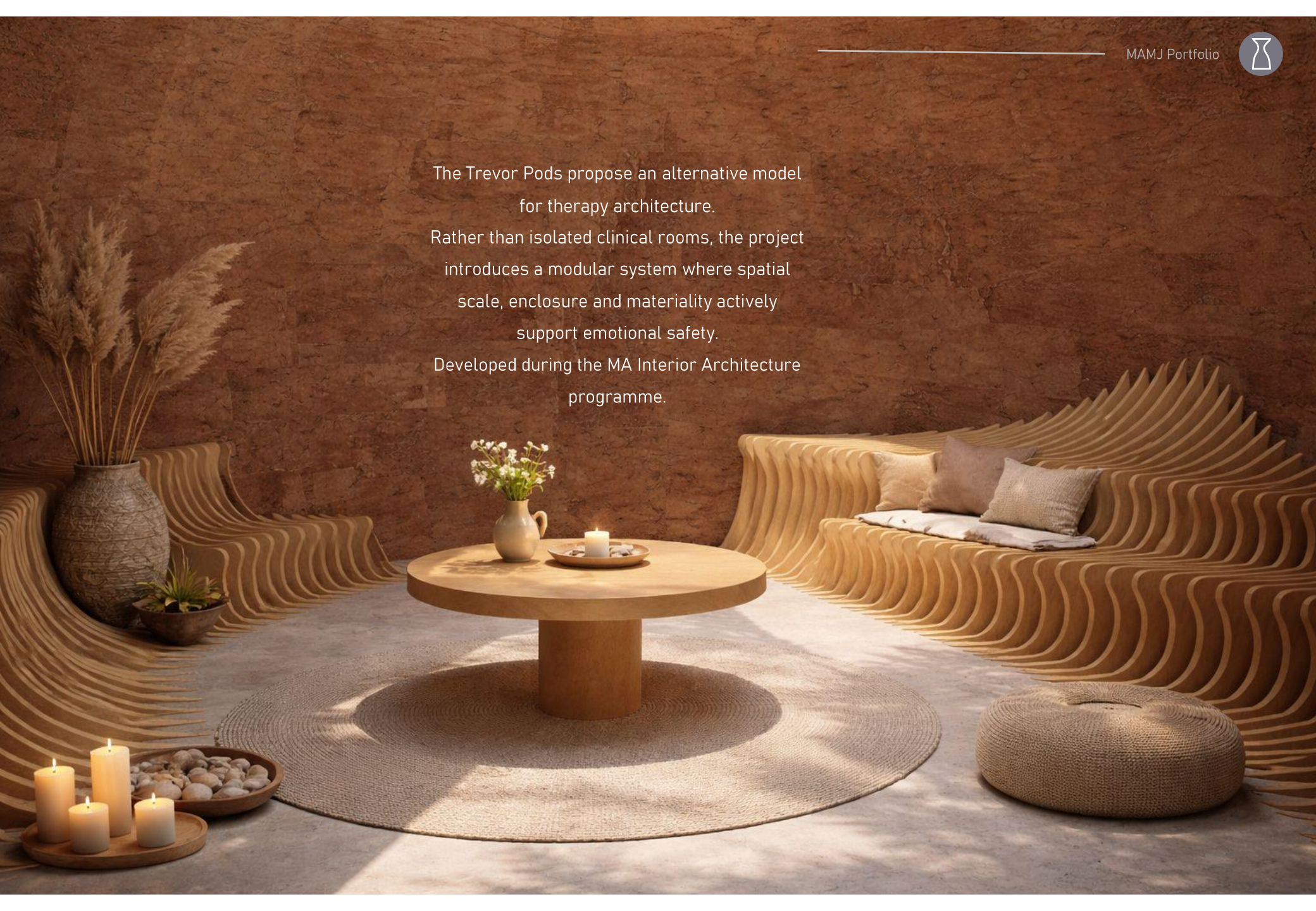




The Trevor Pods propose an alternative model
for therapy architecture.

Rather than isolated clinical rooms, the project
introduces a modular system where spatial
scale, enclosure and materiality actively
support emotional safety.

Developed during the MA Interior Architecture
programme.





2022

LSD DISCO

Immersive nightclub

An immersive nightclub concept inspired by "Lucy in the Sky with Diamonds" Experience-led interior architecture

Design Journal



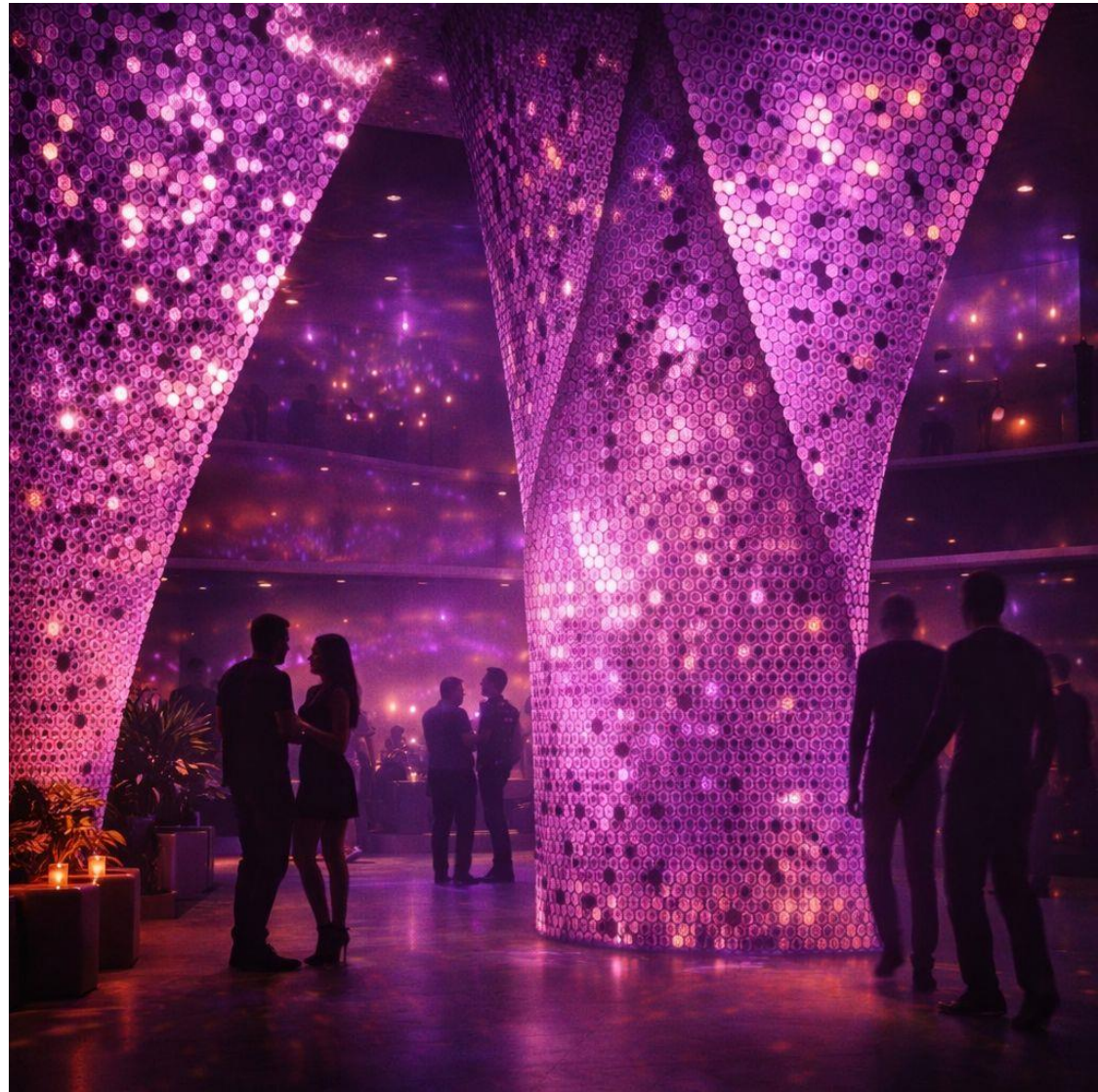
Concept

LSD Disco translates the emotional journey of "Lucy in the Sky with Diamonds" into space:
soft → connection → strong.

A responsive hexagonal membrane becomes the architectural protagonist—shifting between opacity, sparkle and translucency to amplify mood, scale and rhythm.

The result is a club that feels fantasy-led, reflective and psychedelic, designed for young, energetic nightlife.

- Fantasy: surreal glow + dreamlike surfaces
- Reflective: light-play, depth, shimmer
- Psychedelic: colour diffusion + pattern vibration

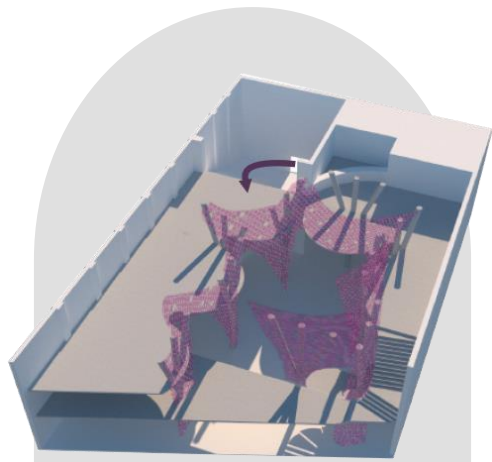




Spatial Journey

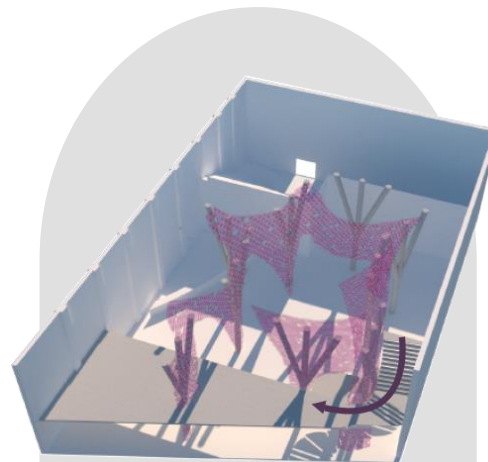
A choreographed transition from arrival to dancefloor, where scale shifts and the membrane tightens around the body like a moving "threshold".

- Compression → release through a curved stair sequence
- Light as guidance → sparkle gradients cue direction and pace
- Moments of pause → edges become social perches and viewing points
- A changing skin → hexagonal panels read as open / closed / half-open states.



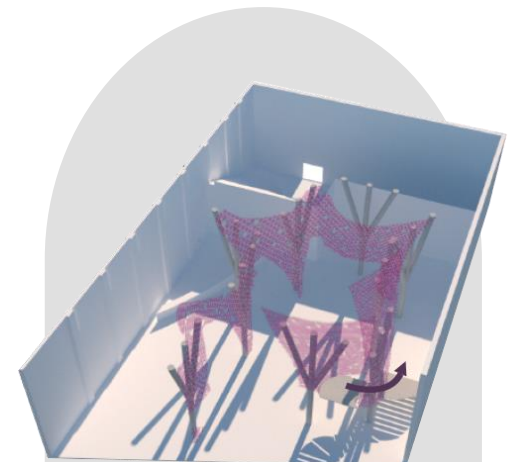
Entrance to Second Floor

The verse inspired this area, having the membrane mostly closed in to have more of a private feeling.



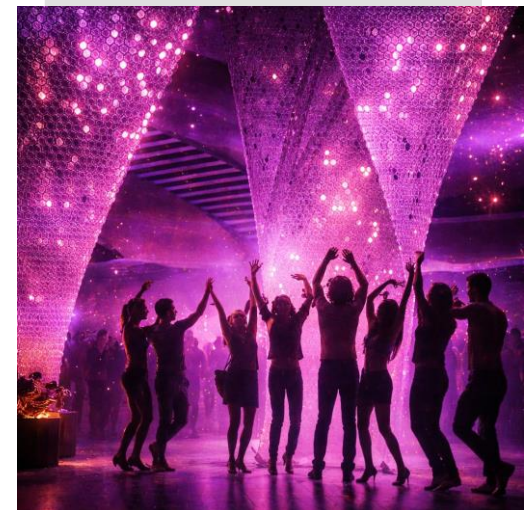
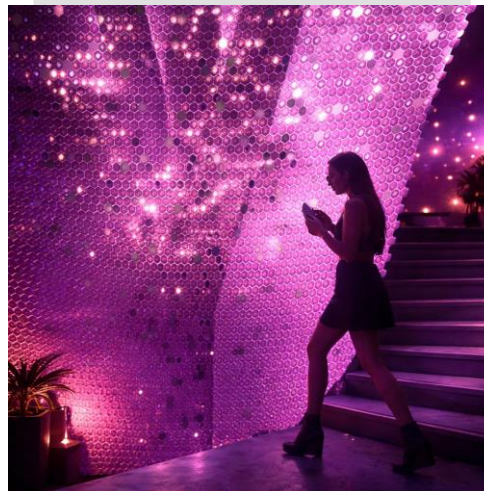
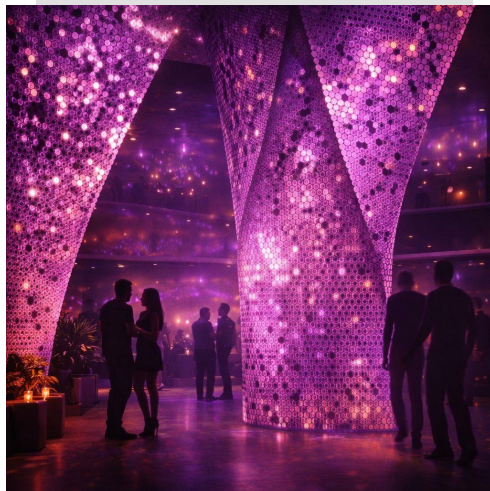
First Floor

The stairs and mezzanine are the bridge or transition, giving more of an in-between cover.



Ground Floor

Finally, the dance floor is where the chorus is showcased with mainly open and lighter coverage.





Thank you

**Maria Alejandra
Martinez Jugo**

Interior Architect